

# MEET SCHEDULE

## July 17 – Track Events

- ⌘ 100m (heats) top 8 times to final
- ⌘ 3000m
- ⌘ Sprint Hurdles  
(SM-JnrM-JuvB-MB-OW-JuvG-MG-BG-BB)
- ⌘ 100m (final)
- ⌘ 400m

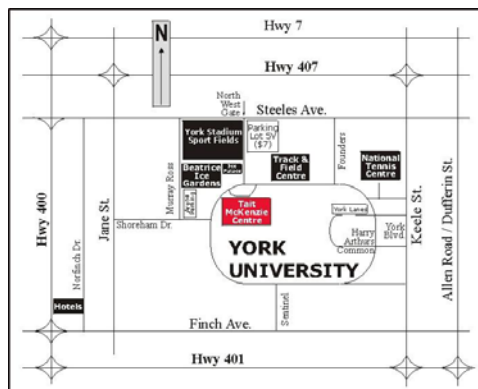
## July 17 – Field Events

- ⌘ Long Jump (women then men)
- ⌘ Javelin followed by Hammer  
(combined)
- ⌘ High Jump (men then women)



### Legend

- |                       |                      |
|-----------------------|----------------------|
| OW - Open Women       | JuvB - Juvenile Boys |
| SM - Senior Men       | MG - Midget Girls    |
| JnrM - Junior Men     | MB - Midget Boys     |
| JuvG - Juvenile Girls | BG - Bantam Girls    |
|                       | BB - Bantam Boys     |



## York University Track Club Summer Twilight Series

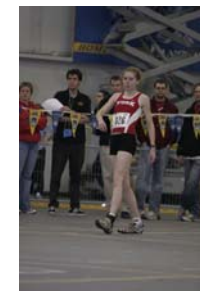
Colin Inglis  
cinglis@yorku.ca  
Tel: 416-736-2100, ext. 44669

Jen Payne  
payne@yorku.ca  
Tel: 416-736-2100, ext. 20119

Web: [www.yorku.ca/yutc](http://www.yorku.ca/yutc)



# 2007 Summer Twilight Series



June 19

July 3

July 17

Toronto Track & Field Centre

## INFORMATION

### Registration:

Entries are made on the night of each meet. The registration desk will open at 4:30pm and entries will close for each event 30 minutes prior to the start of the event.

### Start Time:

6:00pm

### Entry Fees:

\$5.00 per individual event if registered with OTFA.

\$15.00 per individual for first event if not registered with OTFA. \$5.00 for each additional event.

### Where:

Toronto Track and Field Centre.

### Sanctioned:

By OTFA.



## INFORMATION

### Results:

Finish Lynx and wind readings for sprints and horizontal jumps.

Posted at: [www.yorku.ca/yutc](http://www.yorku.ca/yutc)

### Track Events:

Grouped based on gender and ability (submitted seed time).

All races will be run from **Fast to Slow**.

Women followed by men.

### Field Events:

Age groups and genders will be combined. In throws, results will be sorted by implements and gender.

Throwing implements **are not provided**.

---

### Summer Twilight Series

Colin Inglis  
cinglis@yorku.ca  
Tel: 416-736-2100  
Ext. 44669

Jen Payne  
payne@yorku.ca  
Tel: 416-736-2100  
Ext. 20119

Web: [www.yorku.ca/yutc](http://www.yorku.ca/yutc)

## MEET SCHEDULE

### June 19 – Track Events

- ⌘ 100m (heats) top 8 times to final
- ⌘ 800m
- ⌘ Sprint Hurdles  
(SM-JnrM-JuvB-MB-OW-JuvG-MG-BG-BB)
- ⌘ 100m (final)
- ⌘ 400m
- ⌘ 3000m

### June 19 – Field Events

- ⌘ High Jump (women then men)
- ⌘ Long Jump (men then women)
- ⌘ Javelin followed by Hammer  
(combined)

### July 3 – Track Events

- ⌘ Intermediate Hurdles  
(400m/300m/200m)
- ⌘ 200m
- ⌘ 1500m

### July 3 – Field Events

- ⌘ Triple Jump (women then men)
- ⌘ High Jump (men then women)
- ⌘ Shot followed by Discus  
(combined)

